

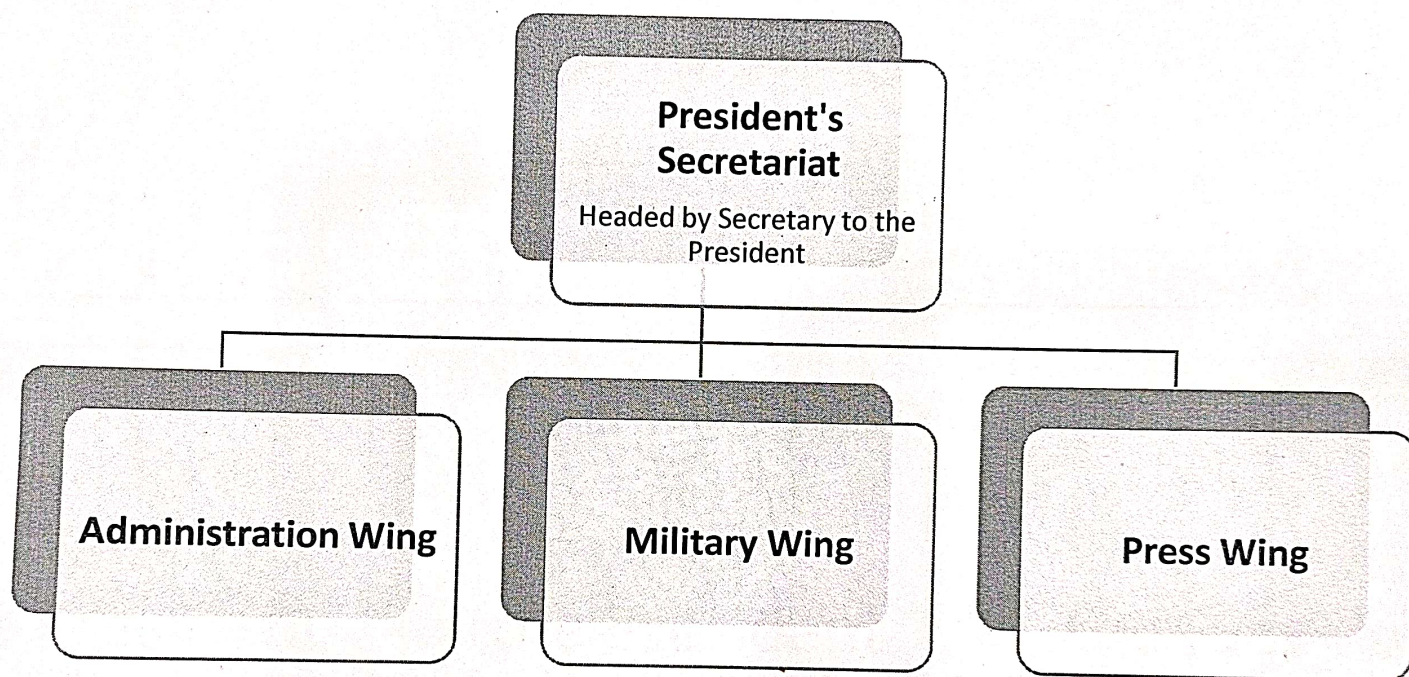
**President's
Secretariat**

Headed by Secretary to the
President

Administration Wing

Military Wing

Press Wing



Secretary to
the President

```
graph TD; A[Secretary to the President] --> B[Additional Secretary to the President]; A --> C[Press Secretary to the President]; A --> D[Military Secretary to the President];
```

Additional
Secretary to
the President

Press
Secretary to
the President

Military
Secretary to
the President

Additional
Secretary to the
President

